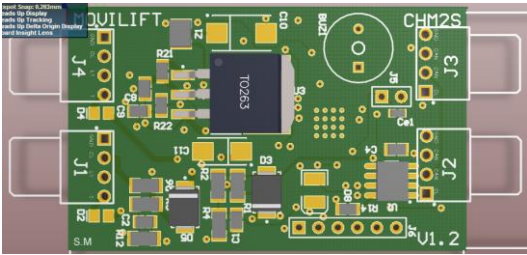


CHM2S DRAWING @



Power supply 12V or 24V.

J2 and J3 connectors can be work in CAN BUS in this way:

Pin1 : Vcc(12-24) Pin2: CANH Pin3:CANL Pin4: GND

J4 and J1 connectors are respectively for UP and DOWN button for Collective in this way:

Pin1 : GND Pin2 : CL (Common for Lights) Pin3 : Uscita Lights Pin4: Ingresso Call

J5 jumper is necessary to programm this board, to can assign each floor; To can make this, close J5 and press n+1times DOWN button (until you reach your floor);.For example. If this board is on the lower floor it is necessary to press DONW button only one time, if this board is for first floor it is necessary to press 2 times DOWN buton. J5 allows also to check programmed floor . This checking is available in the moment J5 will be closed... some beep start (n+1) so we can understand the assigned floor;.

BUZ1 buzzer gives beeps of0, 2sec each time one button (UP or DOWN) is pressed;

Attach the adhesive part CHM2S by placing it behind the operating panel.

Led D8 diode is for diagnostic. When communication between CHM2S and mother board is correct this led blinks each second. If some problems happen it blinks quickly. If communication will be lost i twill be lights fixed. When board is Programming Mode this led blinks each second;

